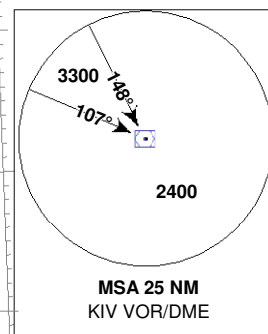
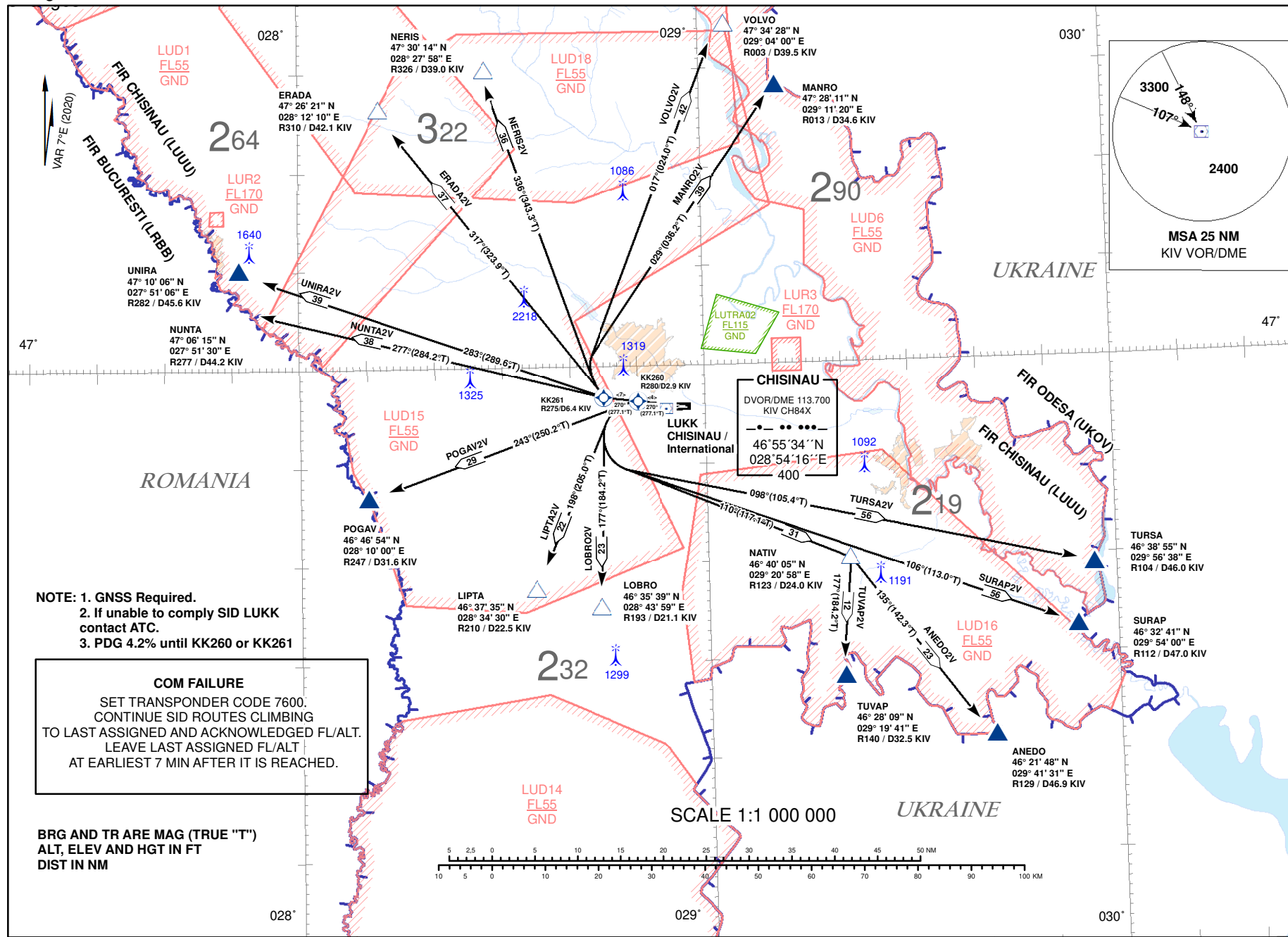


RNAV (GNSS), VOR/DME OVERLAY STANDARD DEPARTURE CHART - INSTRUMENT (SID) - ICAO

 TRANSITION
ALTITUDE 4000FT

CONTROL: 128.975 MHz
APPROACH: 133.300 MHz
TWR: 118.100 MHz

**CHISINAU/Int'l (LUKK)
RWY 27**

 ANED02V, ERADA2V, LIPTA2V, LOBRO2V,
 MANRO2V, NERIS2V, NUNTA2V, POGA2V,
 SURAP2V, TURSA2V, TUVAP2V, UNIRA2V, VOLVO2V
Changes: **New SID.**

**RNAV(GNSS), VOR/DME OVERLAY
STANDARD INSTRUMENT
DEPARTURE (SID) - ICAO**
**CHISINAU/Intl (LUKK)
RWY 27**
Procedure Coding Table

Path Terminator	Waypoint			Course/Track MAG (True)	Dist NM	Turn Direction	Constraints		Navigation Specification	Remarks
	Identifier	Flyover	Coordinates				Level	Speed (kt IAS)		
ANEDO2V										
CF	KK260	Yes	465623.5N 0285008.6E	270 (277.1)	3.5	-	-	-	RNAV 1	Turn at KK260 is calculated with bank 20° and speed 240kt IAS
DF	NATIV	No	464005.0N 0292058.0E	110 (117.1)	30.8	L	-	-		
TF	ANEDO	No	462148.0N 0294131.0E	135 (142.3)	23.2	R	+FL90	-		
ERADA2V										
CF	KK261	Yes	465649.0N 0284504.3E	270 (277.1)	7.0	-	-	-	RNAV 1	Turn at KK261 is calculated with bank 20° and speed 240kt IAS
DF	ERADA	No	472621.0N 0281210.0E	317 (323.9)	37.3	R	+FL80	-		
LIPTA2V										
CF	KK260	Yes	465623.5N 0285008.6E	270 (277.1)	3.5	-	-	-	RNAV 1	Turn at KK260 is calculated with bank 20° and speed 240kt IAS
DF	LIPTA	No	463735.0N 0283430.0E	198 (205.0)	22.4	L	+FL80	-		
LOBRO2V										
CF	KK260	Yes	465623.5N 0285008.6E	270 (277.1)	3.5	-	-	-	RNAV 1	Turn at KK260 is calculated with bank 20° and speed 240kt IAS
DF	LOBRO	No	463539.0N 0284359.0E	177 (184.2)	22.6	L	+FL80	-		
MANRO2V										
CF	KK261	Yes	465649.0N 0284504.3E	270 (277.1)	7.0	-	-	-	RNAV 1	Turn at KK261 is calculated with bank 20° and speed 240kt IAS
DF	MANRO	No	472811.0N 0291120.0E	029 (036.2)	39.1	R	+FL90	-		
NERIS2V										
CF	KK261	Yes	465649.0N 0284504.3E	270 (277.1)	7.0	-	-	-	RNAV 1	Turn at KK261 is calculated with bank 20° and speed 240kt IAS
DF	NERIS	No	473014.0N 0282758.0E	336 (343.3)	36.0	R	+FL80	-		
NUNTA2V										
CF	KK261	Yes	465649.0N 0284504.3E	270 (277.1)	7.0	-	-	-	RNAV 1	Turn at KK261 is calculated with bank 20° and speed 240kt IAS
DF	NUNTA	No	470615.0N 0275130.0E	277 (284.2)	37.8	R	+FL80	-		
POGAV2V										
CF	KK260	Yes	465623.5N 0285008.6E	270 (277.1)	3.5	-	-	-	RNAV 1	Turn at KK260 is calculated with bank 20° and speed 240kt IAS
DF	POGAV	No	464654.0N 0281000.0E	243 (250.2)	29.2	L	+FL80	-		
SURAP2V										
CF	KK260	Yes	465623.5N 0285008.6E	270 (277.1)	3.5	-	-	-	RNAV 1	Turn at KK260 is calculated with bank 20° and speed 240kt IAS
DF	SURAP	No	463241.0N 0295400.0E	106 (113.0)	56.4	L	+FL90	-		
TURSA2V										
CF	KK260	Yes	465623.5N 0285008.6E	270 (277.1)	3.5	-	-	-	RNAV 1	Turn at KK260 is calculated with bank 20° and speed 240kt IAS
DF	TURSA	No	463855.0N 0295638.0E	098 (105.4)	56.0	L	+FL90	-		
TUVAP2V										
CF	KK260	Yes	465623.5N 0285008.6E	270 (277.1)	3.5	-	-	-	RNAV 1	Turn at KK260 is calculated with bank 20° and speed 240kt IAS
DF	NATIV	No	464005.0N 0292058.0E	110 (117.1)	30.8	L		-		
TF	TUVAP	No	462809.0N 0291941.0E	177 (184.2)	12.0	R	+FL90	-		
UNIRA2V										
CF	KK261	Yes	465649.0N 0284504.3E	270 (277.1)	7	-	-	-	RNAV 1	Turn at KK261 is calculated with bank 20° and speed 240kt IAS
DF	UNIRA	No	471006.0N 0275106.0E	283 (289.6)	39.2	R	+FL80	-		
VOLVO2V										
CF	KK261	Yes	465649.0N 0284504.3E	270 (277.1)	7.0	-	-	-	RNAV 1	Turn at KK261 is calculated with bank 20° and speed 240kt IAS
DF	VOLVO	No	473428.0N 0290400.0E	017 (024.0)	42.1	R	+FL90	-		